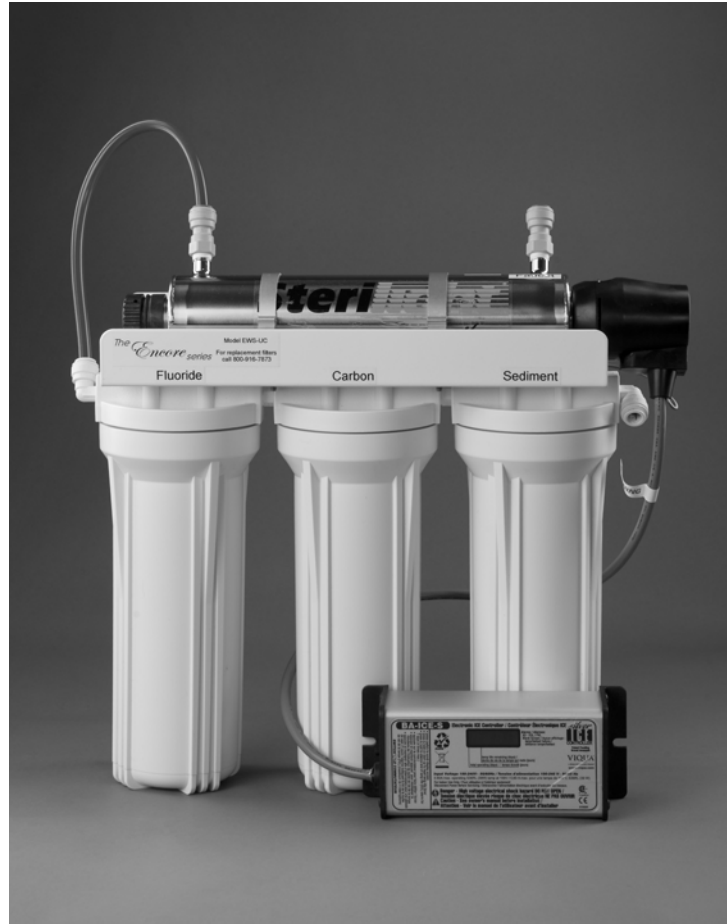


The *Encore* series

INSTALLATION, OPERATION AND MAINTENANCE MANUAL
Model
EWS-UC Encore water filter for under-counter



FPMB1-978 Flow-Pro Melt Blown Filter Cartridge Tested and Certified by NSF International against NSF/ANSI Standard 42 for material requirements only.

MatriKX Pb1 Extruded Activated Carbon Filter Cartridge Tested and Certified by NSF International against NSF/ANSI Standard 42 and Standard 53.

AAL Fluoride/Arsenic Removal Filter Cartridge components are FDA approved.

Sterilight Silver Series UV Systems are CE compliant



Air Life Environmental Products, LLC 321 Spruce Street
Toll Free 800-916-7873 www.airlifeone.com
Manual #EWS-UC-0311

Vicksburg, MI 49097
Fax 269-649-9950
Revision Date November 2011

Thank you for purchasing the Encore premium water purification system!

1-Micron Cartridge

The 1-micron cartridge (100% Polypropylene) reduces infusible particles from feed water and protects the carbon filter from being clogged with the largest particles. This helps in extending the life of the rest of the filters. The sediment cartridge blocks particles 1 micron or larger from contaminating your filtered drinking water. It is recommended that you change cartridge every 6-10 months or upon substantial pressure reduction.

Carbon Block Cartridge

This extruded activated carbon block filter boasts impressive capabilities. The mesh of the ingredient carbon provides for chlorine removal and a dirt/sediment rating of 0.5 micron nominal & 1 micron absolute. This provides cyst removal such as Cryptosporidium & Giardia. The turbidity reduction characteristics allow for even asbestos removal. Lead is removed by incorporating an ion exchange filter media into the carbon block extrusion. It is recommended that you change cartridge every 6-10 months or upon substantial pressure reduction.

Fluoride Cartridge

The activated aluminum cartridge utilizes premium ion exchange resins and specialty absorbents to remove a wide variety of harmful contaminants including fluoride. Strict quality control over all aspects of cartridge production allows complete trace-ability of every filter. It is recommended that you change cartridge every 6-10 months or upon substantial pressure reduction.

System Maintenance

Many contaminants in the drinking water are undetectable to the taste. Additionally, you may notice odors as well as bad taste becoming apparent in your drinking water if the proper maintenance schedule is not observed. Proper maintenance of this filter system will ensure satisfactory results in the cleanliness and clarity of your drinking water. Typically, water pressure will drop significantly when the cartridges have reached their capacity.

Table of Contents

Operational Parameters -----	3
Contents of Encore Premium Water Purification System -----	3
Tools Recommended for Installation -----	3
Encore Bracket Installation -----	4
Drill a Hole for Encore Top Mount Faucet -----	5
Faucet Installation Diagram-----	6
Supply Valve Installation -----	7
System Start-up -----	8
Filter Change -----	8
Replacement Parts Order Sheet -----	9
Warranty -----	10

Operational Parameters

	Maximum	Minimum
Operational Temperature	100 F (37.8 C)	40 F (4.4 C)
Operating Pressure	85 psi (5.98 kg/cm ²)	20 psi (1.406 kg/cm ²)
pH Parameters	10	5
Flow Rate	0.5 GPM@ 60 psig	

Contents of Encore Premium Water Purification System

- 1 Encore premium water purification system
- 3 Filter cartridges (installed)
- 1 Supply hose
- 1 Parts bag
- 1 Faucet assembly
- 1 Filter housing wrench

Tools Recommended for Installation

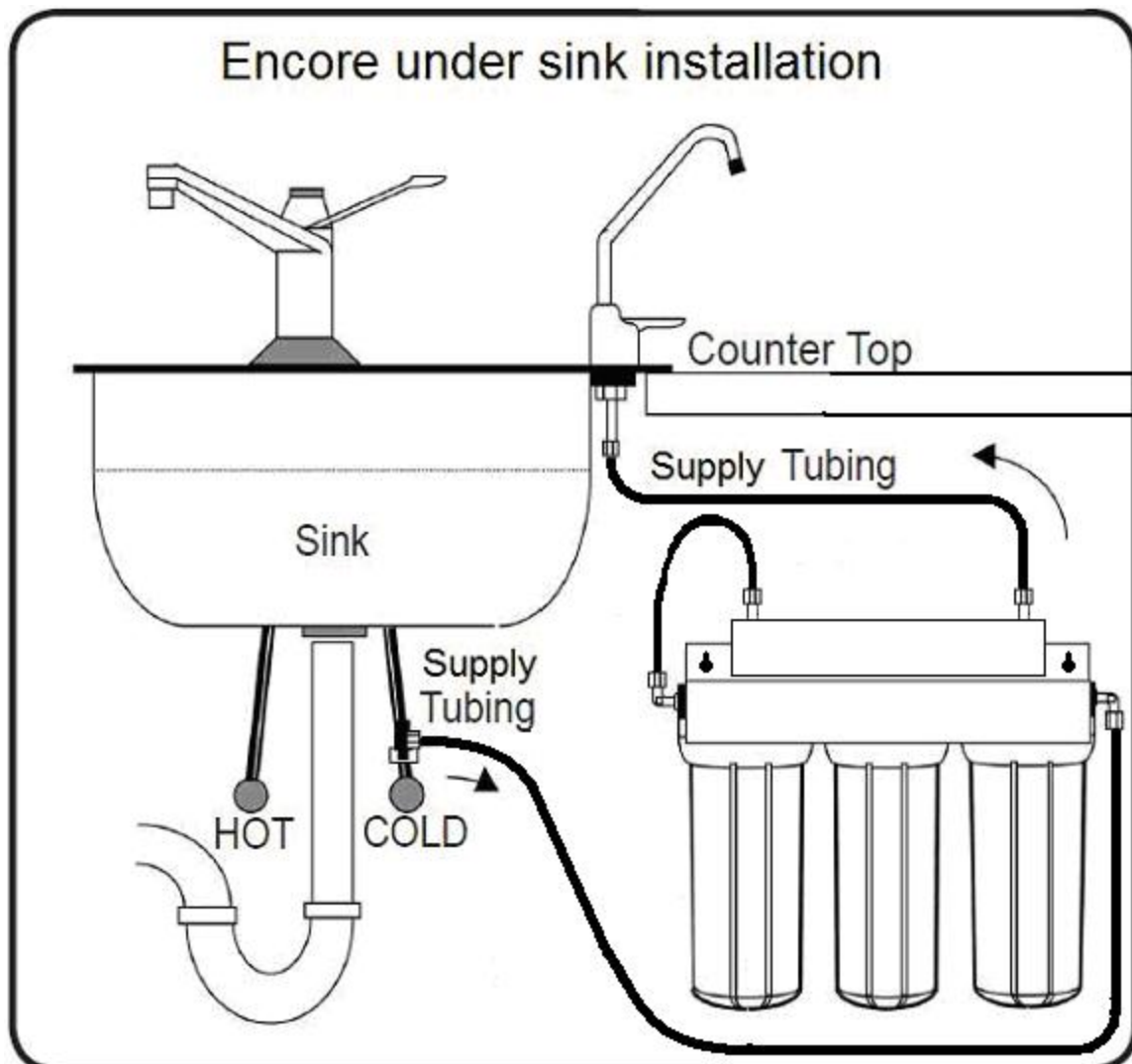
- Utility knife
- Variable speed drill
- 1/8" (3mm), 1/4" (6.4mm) and 7/16" (11mm) drill bits
- 1/2" Diamond-tip drill bit for porcelain sink applications
- 1/2" Hole Punch for Stainless Steel sink applications
- Adjustable wrenches (2)
- #2 Phillips head screwdriver

Installation

This system has been designed to fit under most kitchen sinks. Please read the entire manual carefully before proceeding with installation. **NOTICE: UV system installation instructions can be found in the UV owners manual.**

Step 1: Mounting system under sink

- a) Locate a space under the sink that allows the unit to be mounted close to the cold water supply and allows for easy access during maintenance and filter changes. System must be installed to the cold water supply only. Allow a minimum of 2" of clearance between the bottom of the filter housings and the floor of the sink cabinet and 14" minimum on the right side to replace the UV bulb.
- b) Using the mounting holes on the bracket, mark the location for the mounting screws on the cabinet wall under the sink.
- c) Screw two (2) screws into the wall at the marked locations.
- d) Hang the system on the screws using the mounting holes in the bracket.



Drill a Hole for Encore Top Mount Faucet

Note: Most sinks are pre-drilled with a 1 ¼" or 1 ½" diameter hole that you can use for your faucet. If you are already using this hole for a sprayer or soap dispenser, see step 1.

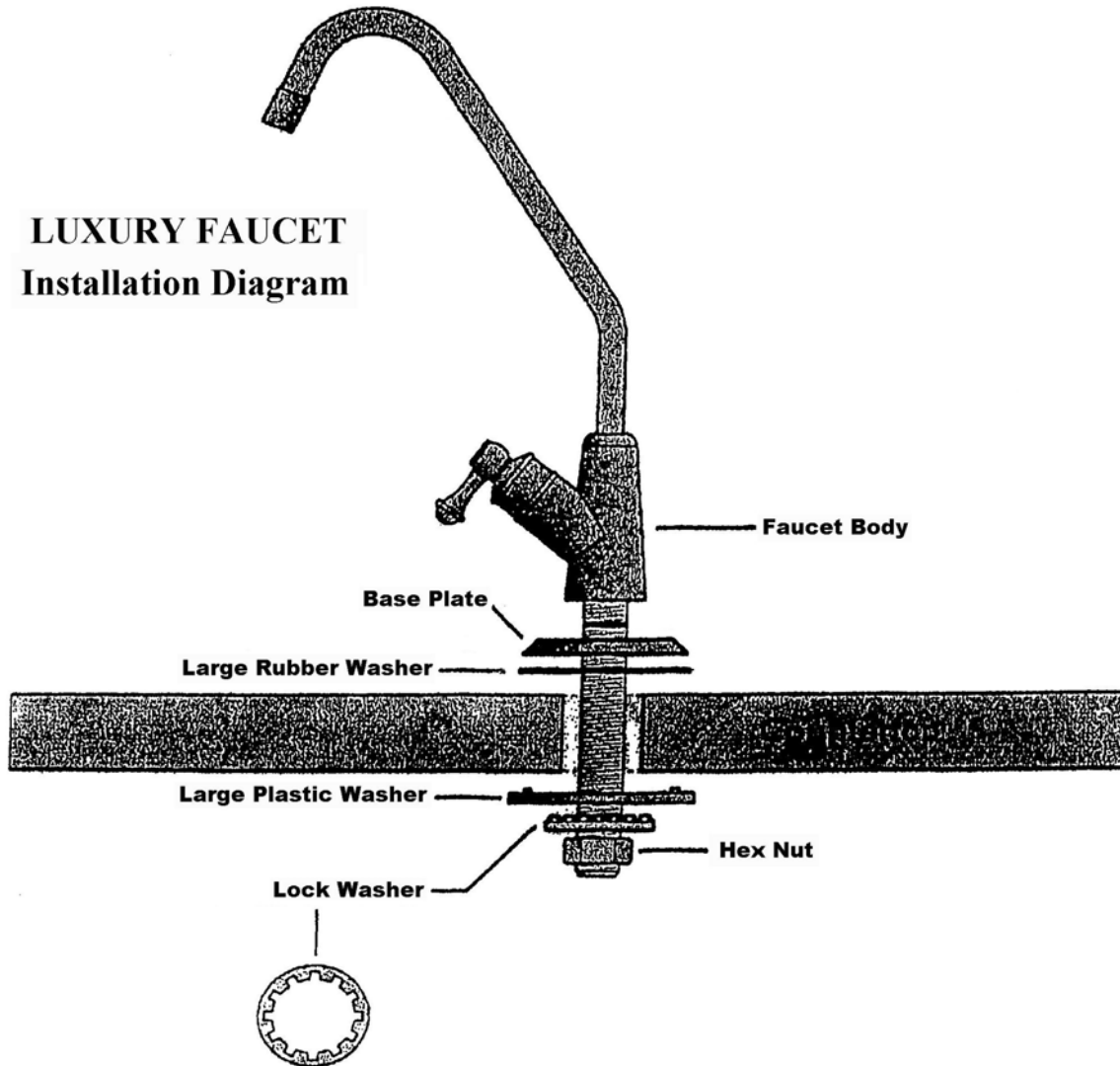
Porcelain sinks are extremely hard and can crack or chip easily. Use extreme caution when drilling. The installer assumes all responsibility for any damage resulting from the installation of the faucet.

Diamond tip drill bits are recommended for drilling in porcelain.

- Step 1: Determine desired location of faucet on your sink and place a piece of masking tape over where the hole is to be drilled. Mark the center of the hole on the tape.
- Step 2: Using a variable speed drill set on the slowest speed, drill a 1/8" pilot drill hole through both porcelain and metal casing of sink at the marked center of the desired location. Use lubricating oil or liquid soap to keep the drill bit cool (If drill bit gets hot, it may cause the porcelain to crack or chip).
- Step 3: Using a 1/2" drill bit, proceed to drill through the pilot hole. Keep drill speed at lowest speed and use lubricating oil or liquid soap to keep the drill cool during drilling.
- Step 4: Make sure the surroundings of the sink are cooled before mounting the faucet to the sink after drilling and removing all sharp edges.
- Step 5: Install faucet making sure opening remains over sink while tightening the retaining nut. Install Faucet Connector Fitting making sure to use Teflon Tape on the threads.

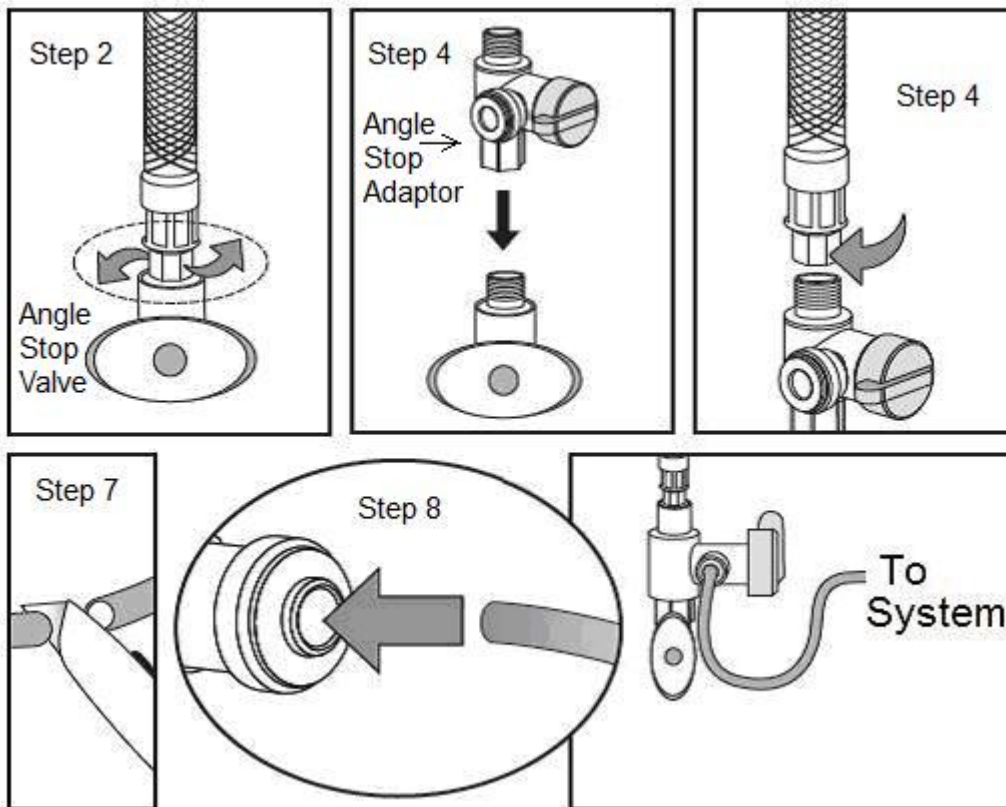


LUXURY FAUCET Installation Diagram



Supply Valve Installation

- Step 1: Locate and close the cold water Angle Stop Valve under your kitchen sink. Open cold water line of faucet to release water pressure.
- Step 2: Unscrew and disconnect the braided tubing on top of the Angle Stop Valve.
- Step 3: Apply Teflon Tape to the threads of the Angle Stop Adaptor and Angle Stop Valve. Wrap tape in direction of the threads to assure a tight fit and avoid small leaks.
- Step 4: Attach the bottom of Angle Stop Adaptor to the existing cold water Angle Stop Valve. Attach braided tubing to the top of the Angle Stop Adaptor.
- Step 5: Close side valve on Angle Stop Adaptor and open cold water Angle Stop Valve to return water service to the kitchen sink. Check for leaks. **Note:** Teflon Tape should not be required for these next steps.
- Step 6: Measure length of tubing needed to connect Angle Stop Adaptor to Inlet Elbow Fitting on Filter Unit. Allow adequate tubing to avoid sharp turns.
- Step 7: Cut tubing at a 90° angle using a sharp knife.
- Step 8: Insert ends of tubing into quick-connect fittings. Push tube into fitting and gently pull to confirm a tight fit.
- Step 9: Measure length of tubing needed to connect the Outlet Elbow Fitting on Filter Unit to the new Faucet Connector Fitting. Allow adequate tubing to avoid sharp turns. Cut and insert each end of the tubing into the fittings.



System Start-up

- Step 1: Turn faucet to the open position to start the flow of water through the unit. Run 7 gallons of water through the unit to flush out the normal black carbon fines (it will “sputter” until the air is purged out) from the unit. Initially the water may appear cloudy which is due to the tiny air bubbles. It will clear up shortly. Close the faucet when finished.
- Step 2: Check for leaks. If you find any leaks, shut off the water supply, tighten any fittings/housings and restart unit.

Filter Change

It is recommended to change the filter elements every 6 months. However, filter life may vary depending on local water conditions and water use.

Use Genuine Encore replacement filter cartridges. Other filters may look the same, but only Genuine Encore replacement filter cartridges can ensure proper reduction of water contaminants. Contact Air Life Environmental Products, LLC at [800-916-7873](tel:800-916-7873) for your filter replacement kits.

- Step 1: Turn off the water supply to the Encore unit at the Angle Stop Adaptor. Open faucet to release water pressure.
- Step 2: Remove filter housing from lid by turning housing to the Left.
- Step 3: Remove used filter cartridge and discard. **Note:** Be careful to retain the housing O-ring.
- Step 4: Clean inside of housing with warm soapy water and rinse well to remove soap residue.
- Step 5: Lubricate O-ring with water-soluble lubricant (K-Y Jelly). **Note:** Do not use petroleum-based lubricants such as Vaseline.
- Step 6: Seat O-ring into groove in filter housing and install new filter cartridges into appropriate filter housings. **NOTICE:** Fluoride cartridge has one end with a rubber gasket. Make sure the rubber gasket goes against the head of the unit, not to the bottom of the canister. Your cartridge will not operate properly if not installed correctly.
- Step 7: Screw filter housing onto filter lid by turning housing to the Right.
- Step 8: Turn on water supply at the Angle Stop Adaptor. Check for leaks.

The *Encore* series

Ordering information

Below is a list of parts kits available for your Encore under counter water system. Remember to change your UV bulb every year (even though it is still glowing) and your filter cartridges every 6-10 months or when you see a substantial drop in water pressure.



Encore Replacement Filter Kit - **ERK011**
Includes: Prefilter, Carbon Block filter,
Fluoride filter and UV bulb



Encore Replacement Cartridges - **ERFS**
Includes: Prefilter, Carbon Block filter,
Fluoride filter only



Encore Replacement Prefilter - **ERSED**
Includes: Prefilter only



Encore Replacement UV Bulb - **ERK009**
Includes: UV replacement bulb only

To order your replacement parts
Call

800-916-7873

Limited Warranty

If any part of your Encore Water System is defective due to workmanship (excluding replaceable filters), return unit after obtaining return authorization, within one-year of original retail purchase and Air Life Environmental Products, LLC will repair or, at their option, replace the system at no charge.

For warranty service, call 800-916-7873 for a return authorization, and then ship your unit, freight and insurance prepaid, with proof of date of original purchase. Please include a description of the problem. Air Life Environmental Products, LLC will repair it, or replace it, and ship it back to you prepaid.

Air Life Environmental Products, LLC is a retailer and distributor of goods and products manufactured by various suppliers. Air Life Environmental Products, LLC offers and provides products on an “as is” basis. Consumers purchase and use these products at their own risk. Since these products are not manufactured by Air Life Environmental Products, LLC, the company disclaims all warranties of merchantability and/or implied warranties. There are no warranties that extend beyond the description of the product herein. Consumers are responsible for determining the suitability of the use of any specific product for use by any individual, considering age, mental or physical condition. Because some states do not allow the exclusion or limitation of liability for consequential or incidental damages, in such states liability is limited to the purchase price of product.

Air Life Environmental Products, LLC 321 Spruce Street Vicksburg, MI 49097
Toll Free 800-916-7873 www.airlifeone.com Fax 269-649-9950
Manual #EWS-UC-1011 Revision Date October 2011